



LE Hooked On A Fly Site



U-Kon, Kreativ Pedagogik HB

Price List 2009

The prices inside can be changed without any notice due to rate changes, higher material costs or other circumstances outside Fishingflies' control.

Now it's time for us all to think of the spring and the new season for fly fishing.

A quick look through the fly boxes shows how many flies you've lost during the season and what you have to fill up with again or what you have to retie.

Here you'll find what you need if you don't want to tie your own flies.

If we haven't got it, we'll fix it, if you just give us an old fly or a recipe.

If you need fly tying materials we also got that, but you'll find it on the web:

<http://www.fishingflies.eu>

Tight Lines!

News in the shop!



Nymph Head Beads - the best tungsten beads you can have for nymphs, streamers and various bugs. Shiny, heavy, and with eyes. Off course we also have flies tied with the new Nymph Head Beads. Now in fresh colours.



Tube flies tied on colored brass tubes and colored plastic tubes as well as normal uncolored plastic tubes. We also have the material you need to tie your own tube flies.



Next Generation Dub - something quite fantastic for your flies. Ecological, from plants, soft and well moving in water. You can get it in brushes for streamers, thread for nymphs and dubbing for all sorts of flies.



Dubbing brushes, and soft dub brushes, ready to wind on the hook. Makes your fly tying easier and faster. Probably also better. You can make a hares ear pupa in seconds.





Czech Nymph material. You can find dubbings, back material, hooks, wire and whatever you need for your Czech Nymphing.



There are always some new flies. Tuffleye pupas, larvas and nymphs. Flies with wings from Stalcups Medallion Sheeting, Extreme colored feathers and so on. All new things you'll find on the web - <http://www.fishingflies.eu> (in English) or <http://fishingflies.ehnstrom.se> (partly in English but most Swedish)

Contents

Traditional Dry Flies - May Flies Page 2	May Flies Special Page 3
Standard Wet Flies Page 4	Wet Flies Special Page 4
Caddis/Sedge and Stone Flies Page 5	Streamers and Lures Page 6
Nymphs and emergers Page 8	Caddis Larva & Pupa Page 10
Various Water Bugs Page 12	Terrestrials Page 13
Midge Flies Page 14	
Tube Flies for Sea Trout and Salmon Page 15	
Hooked Salmon and Sea Trout Flies Page 17	

Traditional Dry Flies - May Flies

12 SEK

We tie up the British or US traditional pattern of your choice on demand.

You can get parachute- or standard hackle on most of them.

Sizes: 12,14,16



Examples:

- Adams
- Bivisibles - Black, Brown, Dun
- Black Gnat*
- Blue Dun*
- Blue Winged Olive*
- Coachman
- Hendrickson's - dark, light
- Iron Blue Dun
- Light Cahill
- March Brown*
- Quill Gordon
- Red Quill
- Royal Coachman

Attention!

Packing, and postage costs will be added.
 Every order is to be paid in advance.
 You'll get information by e-mail about the sum you have to pay through Pay Pal to get your flies or material.
 Contact us if there's anything you need help with concerning your order.
flies@fishingflies.eu

* you can get it with burnt wings.



Blue Dun Burnt Wings

Fishingflies Special May Flies



The Wulff flies - Grey, Grizzly, Royal, Werewulff #10-14

14 SEK



LE CdC May Fly, split wing - Olive, Tan, Black, Brown, Yellow, Orange #10-14

15 SEK



LE Ephemera (All feather) Ginger # 12 extended

14 SEK



LE Biot Vulgata - Biot body, # 10

14 SEK



LE ST Biot Dun - Tan, Brown, Olive # 12-14

15 SEK



Tube Body CdC Vulgata # 12 extended

16 SEK



LE Waterwing Spinner - Ephemerella Aurivilli, Siphonorus, Baetis Rhodani, Baetis Niger, Baetis Subalpinus Heptagenia Sulphurea and H. Fuscogrisea.

15 SEK



Deli Heptagenia. Foambody and CdC - Yellow or Brown.

16 SEK



FireBack May - Foambody with orange butt. Olive, Brown, Yellow # 10-14

14 SEK



LE Biot Dun - March Brown, BWO, Blue Dun, Iron Blue #12-16

12 SEK



Sweetwater May - tied backwards on Waterwisp hook. Sherry Spinner, Yellow May, Grey May and Green Drake. All # 12. Black Gnat, BWO # 16

16 SEK



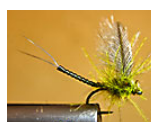
LE Waterwisp May - like the Sweetwater flies. BWO, Black Gnat, March Brown - # 12-14

16 SEK



Borje Special – works well in Swedish Lapland on char, trout and grayling. # 10 – 14

15 SEK



Lip Stik CdC BWO – Lip Stik Body.

15 SEK

Traditional Wet Flies

12 SEK (Single hook) 17 SEK (Double hook)

Some of the old wet flies are still going strong. We make them all - as far as we know. Tell us what you want and we'll try to fix it. You can get them on single hook or double hook. Sizes 10 - 14

Examples:

Black Gnat

Blue Dun

Bradshaws Fancy

Butcher

Coachman

March Brown

March Brown Silver

Red Tag

Wickhams Fancy

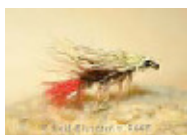


Red Tag Wet Fly



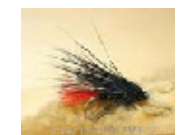
March Brown Wet Fly

Fishingflies Special Wet Flies



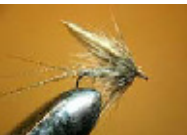
Red Tag Mini Muddler # 10-12

12 SEK (Single hook) 17 SEK (Double hook)



Black Zulu Mini muddler # 10-12

12 SEK (Single hook) 17 SEK (Double hook)



Conba March Brown # 10-12

14 SEK



Jock Olsen - Jock Scott and Olsen in an incredible mix. # 10-12

12 SEK (Single hook) 17 SEK (Double hook)



NGD Spider. Colors: Orange, Partridge och Brown. # 12 -14. Works as a flymph in the water and is very effective.

16 SEK



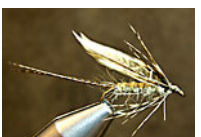
Peter Ross – single or double hook.# 10-14.

13 SEK (single) 18 SEK (double)



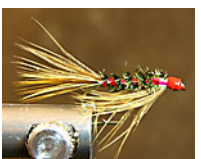
McGee – single or double hook # 10-14

13 SEK (single) 18 SEK (double)



Hare's May – single or double in natural, brown, olive or light olive. # 10-14

13 SEK (single) 18 SEK (double)



Diawl Bach – red, orange, olive, black – with or without flashback. # 10-14

13 SEK

Caddis/Sedge and Stone Flies



Deer Head Caddis. Deer in the body, muddler head, really good profile # 10-14
14 SEK



CdC and Elk Hair Caddis. # 10-14 - olive, brown, tan or grey body.
15 SEK



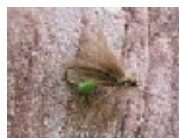
Crippled Sedge. Spent wing sedge fly on Klinkhamer Extreme hook. Tips the abdomen in water and just floats in the surface. # 12-16 Green, tan or orange.
15 SEK



CdC Vesterelva Caddis - # 12. CdC in body, Medallion wings and muddler head.
15 SEK



Deer Hackle Caddis. Like Deer Head, but instead of muddler head there is a hackle made from Swedish moose hair. # 10-14
14 SEK



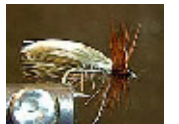
CdC Egglaying Sedge. The sedge floats in the surface with the egg ball underneath. #12-14
15 SEK



Elk Hair Caddis # 12-16 - tan body, brown hackle.
14 SEK



Pearl Caddis. Egglaying caddis with green pearl as egg ball # 12-16 Klinkhamer hook. Dipping the back into the water. Olive, brown, orange or cinnamon body.
15 SEK



Europea 12, Swedens most used caddis fly. # 10-14.
13 SEK



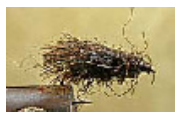
Goddard Caddis. Superfloater for ruff water # 10-14
13 SEK



Nalle Puh - fluttering caddis pattern from Finland. Brown, Olive, black or hot orange body # 10 -14
13 SEK



Streaking Caddis. Swedish pattern for large brown trout. Big fly, making lots of noise when stripped through the water # 10 -12 streamer hook.
13 SEK



Rackelhanen. Another Swedish caddis pattern. All polypropylene yarn well treated in Hydrostop or Water Shed. # 10-14 brown.
12 SEK



LE Stone Fly. The adult, resting stone fly. Dark olive, black or yellow in size 10 to 14.
14 SEK

Streamers and Lures



The Animal. A leach or... Anyway it works fine on brown trout, rainbow trout and sea trout. # 8-12 streamer hook. Black, black/orange body, black/yellow body.

14 SEK



Mickey Finn # 8-12

14 SEK



Black Satan. A Swedish pattern which has proved to be good. # 6-12

14 SEK



Whiskey Fly. # 6-12

14 SEK



Woolly Bugger # 8-12 - black, olive, orange, yellow

14 SEK



Woolly Worm #8-12, black, brown, olive, yellow

14 SEK



Matuka #6-12, golden, green, brown, black, grizzly.

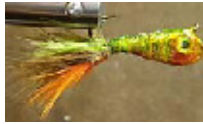
14 SEK

The picture = Golden Matuka



Muddler Minnow #8-12. natural, olive, orange, black, yellow.

14 SEK



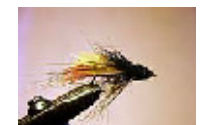
Minifish Pearch. # 6-12

18 SEK



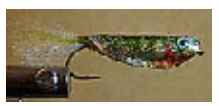
Minifish Gold # 6-12

18 SEK



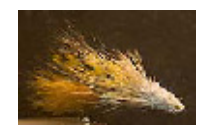
Hilla Special # 6-12, yellow, red, orange

16 SEK



Crystal Skin Minnow # 6-12, green, blue, silver

16 SEK



Grizzly Wing Muddler # 6-12, burnt orange, golden olive, natural.

16 SEK



**Zuddler # 6-12, olive, black, brown.
15 SEK**



**Zonker # 6-12, olive, black, brown
15 SEK**



**Barred Rabbit Zonker # 6-12, tigerbarred orange, tigerbarred green, tigerbarred blue, brown, olive.
16 SEK**



**LE Ghost Streamer # 6-10
15 SEK**



**NGD Bead Eye Streamer # 6-10, olive, black, brown, white.
16 SEK**



**NGD Cone Streamer # 6-10, oliv, orange, black, brown, white
19 SEK**



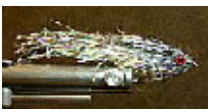
**Dammåflugan #4-8 (salmon hook)
16 SEK (single hook) 20 SEK(double)**



**KwickFish. # 6-10 TMC200R type hook. Silver, gold, green back, blue back or perch.
18 SEK**



**EZ Fish # 6-10, black, tan, olive. Upside down with heavy sculpin head.
20 SEK**



**N.E.W Redeye Minnow # 6-10, Made of Nuclee-R Emission Wing material. Flashy!
16 SEK**

Nymphs and Emergers



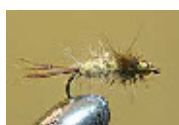
Aurivilli Nymph # 12-14, brown, olive, black.
12 SEK



Gold Ribbed Hares Ear Nymph # 10-14, nature, olive, black,
12 SEK



Bead Head Hares Ear Nymph #10-14, nature, olive, black
13 SEK



Dubbing Brush Disco Nymph #10-14, tan/brown, olive/brown. With faceted bead
14 SEK



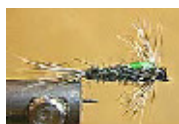
NGD Czech Nymph # 10-14, olive body with red, orange, pink or yellow dot.
14 SEK



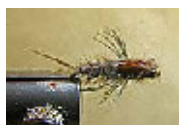
LE CdC Floating Nymph #12-14, olive, brown, tan, black.
14 SEK



Nymph Head Stone Fly Nymph # 10-14, black, dk olive, yellow.
16 SEK



Black Martinez. # 6-12 streamer.
12 SEK



March Brown Nymph # 10-14
12 SEK



Montana Nymph # 6-12 streamer. Yellow, Green, Copper, Fluo Yellow or Fluo Green
12 SEK



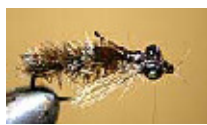
LE Damsel Nymph # 10 Swimming Nymph Hook. Light olive.
16 SEK



Double NGD Damsel # 12+12 the abdomen is tied on an own hook. Light olive.
16 SEK



LE NGD Dragon # 4-8 TMC200R hook, Dark olive, Dark brown.
16 SEK



Dragon Fly Nymph #8-10 Long Shank Sedge Hook.
14 SEK



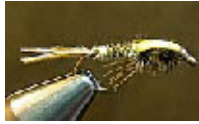
NGD Klinkhamer # 12 - 16 Klinkhamer hook, beige, brown, black, olive
14 SEK



Small Klinkhamer # 12-14 Mustad C49S beige, black, brown, olive
14 SEK



**LE Czech Nymph # 10-12 Partridge Czech nymph hook. Olive, beige, brown or black with dots in orange, red or pink. Back brownish.
14 SEK**



**LE Softbody Nymph #12-16, tan, brown, black, olive
12 SEK**



**NH Softbody Nymph #12-16, tan, brown, black, olive
16 SEK**



**LE Siphonours Nymph # 12 streamer hook.
14 SEK**



**LE Emerging May # 10-14 TMC 2488. Blue Dun, March Brown, BWO
14 SEK**



**LE CdC Emerging Caddis Hanging in the surface. # 14 -18 (klinkhamer extreme), green, tan, tan, brown, orange.
14 SEK**



**LE Hatching May # 10-14, Blue Dun, Brown, Olive
14 SEK**



**LE Hatching Ephemera # 6-8 TMC 200R.
16 SEK**



**LE T-Nymph # 12-16 TMC 200R. Brown, olive, black, tan
14 SEK**



**NGD M Dragon #12 streamer attached, rust or olive.
16 SEK**



**Paraloop Klinkhamer #12-16 Klinkhamer hook. Beige, olive, black, brown.
14 SEK**



**CdC Midge Emerger # 14-16
14 SEK**



**Spectra Klinkhamer # 14-16, beige, brown, olive, black
14 SEK**



**Nymph Head Heptagenia Nymph. # 12 long nymph.
16 SEK**

Caddis Larva and Caddis Pupa



Cased Caddis - Sand - streamer hook 10-12

14 SEK



Cased Caddis - deer hair - streamer hook 10-12

14 SEK



Cased Caddis - burnt nylon (looks like sand) - streamer hook 10-12

14 SEK



Cased Caddis - feather strips - streamer hook 10-12

14 SEK



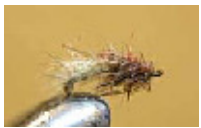
CdC Emerging Caddis - Hanging in the surface. # 14 -18 (klinkhamer extreme), green, tan, tan, brown, orange.

14 SEK



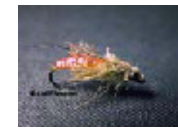
D-rib Pupa- # 10-14 Sedge hook. Olive, tan, brown, orange.

14 SEK



Dubbing Brush Pupa - # 10-14 Sedge hook. Olive, tan, brown, orange.

12 SEK



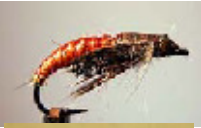
CdC Vesterelva caddis Pupa - # 10-16 Long shank sedge hook. Orange, olive, tan.

14 SEK



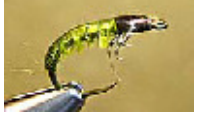
Caseless Caddis Larva -Rhyacophilidae # 12, green or tan.

14 SEK



Vesterelva Caddis Pupa - # 10-16 Long shank sedge hook. Orange, olive, tan.

14 SEK



Hydropsyche Larva - # 12 Czech Nymph Hook. Covered with Tuffleye. Olive or brown.

18 SEK



Nymph Head Pupa - # 10-14. Brown or olive.

16 SEK



Nymph Head Eikre Pupa - # 12-14, Dark brown with yellow, orange or red dot. Also Black with red dot.

16 SEK

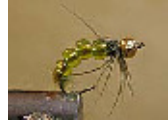


Gary Glitter - # 10-14 - Light or dark variant gold headed.

12 SEK



Eikre pupa - # 10-16, dk brown with yellow, orange or red dot. Also Black with red heart.
12 SEK



LE Nymph Head Killer Caddis - # 12 Daiichi Glass Bead Hook.
16 SEK



Johans Pupa - LE variant. # 10-14, Lite olive, dark olive, brown.
12 SEK



Leffes Pupa - floating. # 10, Green or yellow belly.
12 SEK



V Rib Pupa- # 10-14, green, brown, orange.
12 SEK



Superpuppan - Super Pupa. Floating - # 10-16. Yellow, dk yellow, lt olive, dk olive, Tan
12 SEK



Pasis Larva - # 10-16 long shank sedge hook.
14 SEK



LE Pupa - # 10-14, lt olive, dk olive, tan, brown, yellow, cinnamon, orange.
12 SEK



NGD Larva - # 10-16 long shank sedge hook. Green or tan.
14 SEK



LE Ostrich Sedge Pupa - # 10-14. Orange, tan, oliv.
12 SEK



Gold Ribbed Hares Ear. # 10-14, natural hares ear, oliv, brown.
12 SEK



Bead Head Hares Ear - # 10-14, natural, oliv, brown
13 SEK

Various Water Bugs



Asellus - Sowbug/Hoglouse - # 10-12.

14 SEK



Corixa - Water Boatman - looks like the backswimmers but are smaller

14 SEK



NGD Scud - Gammarus- # 10-14, lt olive, dk olive, shrimp pink, burnt orange(rust).

14 SEK



LE EeZee Sand Worm - 10-15 cm - hook 8 saltwater. Mallow, black or brown.

15 SEK



LE Sand Worm - double hooked - one at the head and one by the tail end. 10-15 cm
Grey, black, pinkish.

15 SEK



Stone Fly Nymph # 10-14 TMC 200R. Black, stone yellow, dk olive.

16 SEK



LE Simulidae - Black Fly - # 14-18

14 SEK



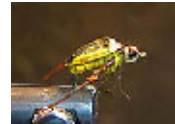
LE Translucent Shrimp, # 4-10 Saltwater hook. Clear, Pink.

15 SEK



Parasol Hackle Midge # 14-18

14 SEK



NH Sunflower Diver # 12

15 SEK



NGD Hoglouse/Sowbug - # 10-12

14 SEK

Land insects - Terrestrials



Midge fly - # 14-16
14 SEK



CdC Wasp - #10-12
14 SEK



CdC Bumble Bee - # 8-10
16 SEK



Red Flying Ant - #12-16, foam body.
14 SEK



Black Flying Ant - # 12-16
14 SEK



LE Daddy Long Legs - hook 12 extended body.
14 SEK



LE Extreme Wasp # hook 14 Klinkhamer Extreme
16 SEK



"Flying" Spider # 12-14
12 SEK



Green Back Beetle # 10
14 SEK



LE Foam Wasp # 10 extended.
14 SEK



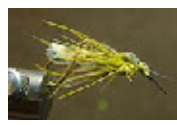
LE Mini Mouse - # 4-10 Streamer hook.
16 SEK



LE Foam Ant - # 12-16, red or black.
12 SEK



"Ryssflugan" Bibio Pomonae - # 10-12 slightly extended.
14 SEK

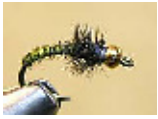


LE Hopper - # 10-14 short streamer hook.
14 SEK

Midge Flies



Bead Head Hacklestem midge pupa - # 14-18
14 SEK



Pheasant Tail Midge pupa - # 14-18, olive, brown, black
14 SEK



LE Palomino Midge - # 12-16, rust, olive, lt brown, dk brown, black
14 SEK



LE Parasol Midge - #12-16, black, grey, olive biot or grizzly hackle stem.
15 SEK



LE Simuliidae - Black Fly - # 12-18
14 SEK



LE Brassie - # 12-16
10 SEK



LE Emerging Midge - #12-16, olive, brown, black
14 SEK



LE Micro Ice Braid Midge pupa - #12-16, olive, black, green
13 SEK



LE Mini Buzzer - # 18-20, black/orange, brown/orange, all red, olive/chartreuse.
13 SEK



LE D Rib Midge Pupa - # 12-16, rust, olive, black, brown
14 SEK



LE Electric Buzzer - #12-16, Blue, hot green, hot orange, red, chartreuse.
13 SEK



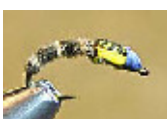
Mosquito - # 14-16
15 SEK



LE Shuttlecock Midge - # 12-16. Grizzly, black, brown
14 SEK



LE Glass Bead Midge - # 12-16. Lt gree, dk green, black, brown
15 SEK



Softbody Buzzer - # 12-16, lt brown, dk brown, black, grey, olive
13 SEK



Lip Stik Mosquito - # 14-16 – Lip Stik body.
14 SEK

Tube Flies for Sea Trout and Salmon

The tubes we use are from Eumer in Finland. The plastic tubes come in clear, red, fluo orange, fluo yellow, fluo green, fluo blue, fluo purple and black.

The brass tubes come in about the same colour range and we've got Cone Head tubes in 10, 15, and 20 mm.



Cone tubes in 13,17 and 22 mm and we've also got



Tag tubes in 13 and 17 mm.

Please note: The tube fly hooks comes extra. See page xx hooks.



Den Vanlige - The Usual one - Clear or colored tube with black cone head. # 15-40 mm. Wing about 5-9 cm.

25 SEK



LE Ella Zonker - clear tube 20 mm. Wing about 7 cm.

23 SEK



LE Assassin - Blue, Purple, Red, Orange and Yellow. Clear tube 15, 20, 25 or 30 mm long, with cone head. Length overall about 7-9 cm

28 SEK



LE Golden Killer - clear tube 15-25 mm with gold cone head.

25 SEK



LE Purple Preacher - clear or purple tube 25 mm with black cone head.

25 SEK



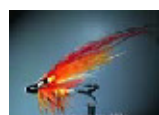
LE Tippet Shrimp - fluo pink or orange tube 25 mm with black cone head.

25 SEK



LE Silver & Silver - clear tube 15-25 mm with silver cone head.

25 SEK



Monarch Tube - fluo orange tube 25-35 mm and black cone.

25 SEK



Thunder & Lightning Tube - Black tube 15-35 mm.

23 SEK



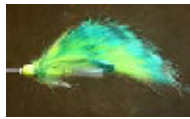
Pot Belly Pig Tube - Tube color as the body. Body colors red, purple, yellow, orange,

23 SEK



Blue Moon Tube - Clear tube, glow in the dark body.

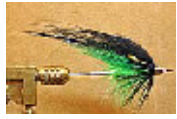
23 SEK



Colibri - Hummingbird. Hot olive Cone Head Tube 15 mm
28 SEK



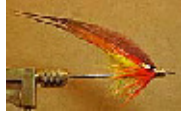
Copper Joe Ice Tube- orange tube 15-25 mm and copper cone head.
25 SEK



Black & Green Tube - green tube 15-25 mm and black cone head.
25 SEK



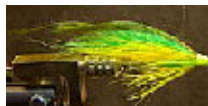
Fenix Tube - orange Cone Head Tube 10 or 15 mm.
28 SEK



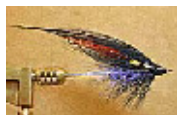
The Gothenburger Tube - clear or orange tube 15-25 mm and black cone head.
25 SEK



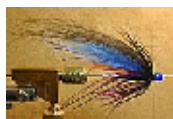
Kloefta Tube - clear tube 25-35 mm.
23 SEK



Mean Green Tube - Fluo green Cone Head Tube with fluo yellow head.
28 SEK



Black Mickey B Tube - clear tube 15-25 mm and black cone head.
25 SEK



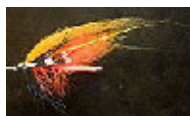
Purple and blue Tube - Blue Cone Tube.
28 SEK



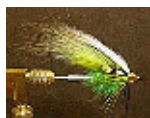
Peter's Herring - clear tube 15-25 mm and silver cone head.
25 SEK



Sunset Dark Tube - Red tube 15-23 mm and black cone head.
25 SEK



Sunset Light - Pink tube 15-23 mm and black cone head.
25 SEK



Tricolor Tube - yellow tube 15-23 mm and gold cone head.
25 SEK



Canary Tube - yellow tube and gold cone head.
25 SEK



LE Rainbow Tube - clear tube 25-35 mm.
23 SEK

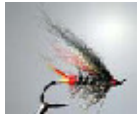


Midnight Sun Tube - black tube 15-25 mm and black cone head.
25 SEK



LE Blues Tube - orange tube 15-25 mm and blue cone head.
28 SEK

Hooked Salmon and Sea Trout Flies



Black Doctor - # 4-8 single or double hook.
20 SEK Single
24 SEK Double



Black Bear Green Butt - # 4-8 single or double hook.
20 SEK Single
24 SEK Double



Blue Tail - # 4-8 single or double hook.
20 SEK Single
24 SEK Double



Blue Moon Salmon - # 4-8 single or double hook.
20 SEK Single
24 SEK Double



Damma Fly -# 4-8 single or double hook.
20 SEK Single
24 SEK Double



Fire Tail - # 4-8 single or double hook.
20 SEK Single
24 SEK Double



Green Head Bug - Dry Fly # 4-10 single.
€2.14, £1.69, US\$3.37, 20 SEK



Green Highlander - # 4-8 single or double hook.
20 SEK Single
24 SEK Double



Hairy Mary - # 4-8 single or double hook.
20 SEK Single
24 SEK Double



Syrstad Brunt Vann -# 4-8 single or double hook.
20 SEK Single
24 SEK Double



LE Grass Hopper - # 4-8 single or double hook.
20 SEK Single
24 SEK Double



LE Foxy Lady Yellow - # 4-8 single or double hook. Also in orange, red, blue and purple. €1.70, £1.35, US\$2.70, 16 SEK Single
20 SEK Single
24 SEK Double



LE Garry - # 4-8 single or double hook
20 SEK Single
24 SEK Double



LE Prince - # 4-8 single or double hook
20 SEK Single
24 SEK Double



LE Skaidi - # 4-8 single or double hook
20 SEK Single
24 SEK Double



March Brown Salmon Fly - # 4-8 single or double hook

20 SEK Single

24 SEK Double



Monarch Salmon Fly - # 4-8 single or double hook

20 SEK Single

24 SEK Double



Pink Panther - # 4-8 single or double hook

20 SEK Single

24 SEK Double



Pot Belly Shrimp - # 4-8 single or double hook

20 SEK Single

24 SEK Double



Red Abbey - # 4-8 single or double hook

20 SEK Single

24 SEK Double



Li'l Red Riding Hood - # 4-8 single or double hook

20 SEK Single

24 SEK Double



Pot Belly Pig - # 4-8 single or double hook, also in yellow, orange, red, black.

20 SEK Single

24 SEK Double



Rusty Rat - # 4-8 single or double hook. Also Blue, black, silver and copper Rat.

20 SEK Single

24 SEK Double



Silver Doctor - # 4-8 single or double hook

20 SEK Single

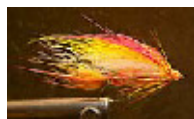
24 SEK Double



Silver Grey - # 4-8 single or double hook

20 SEK Single

24 SEK Double



Skykomish Orange - # 4-8 single or double hook

20 SEK Single

24 SEK Double



Thunder & Lightning - # 4-8 single or double hook

20 SEK Single

24 SEK Double



The Undertaker - # 4-8 single or double hook

20 SEK Single

24 SEK Double



Foxfire - # 4-8 single or double hook

20 SEK Single

24 SEK Double



Grizzly King - # 4-8 single or double hook

20 SEK Single

24 SEK Double